



MiniRAY[®]

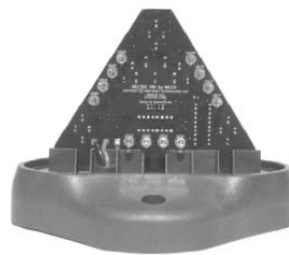
LED Warning Beacon
Mounting Instructions
Please retain for future reference



Fixing screws, nuts and star washers included



Front facing



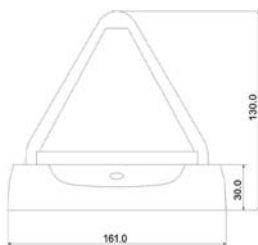
Rear facing

Beacon should be mounted in a forward facing position. Light pattern opens up to a large pattern with distance.



Spare part lens
Part number 9.HM180LENS

4.5 mm Hole





MiniRAY®

LED Warning Beacon

Mounting instruction

Please retain for future reference

Technical data

	Voltage
Voltage	12-24 VDC
Candella	560
FPM	User Selectable
Amps	1A
Mass	0.5 kg
Lamp type	LED

Wiring Instructions: Dual Mode Flash Operation

The wiring for this configuration is shown in the diagram. All wiring should be a minimum of 0.85 mm² (18 AWG). The red wire is positive and must have a 10 amp fuse. A switch may be used to control the on/off function. The black (negative) wire is connected to the battery ground. The yellow wire is designed to be connected to the vehicles' reverse circuitry. This allows the backup flash pattern to operate when the vehicle is in reverse.

Notes:

1. Use grommets and sealant when passing wiring through compartment walls. Minimize the number of splices to reduce voltage drop. High ambient temperatures (e.g. under hood) will significantly reduce the current carrying capacity of wires, fuses and circuit breakers. All wiring should conform to the minimum wire size and other recommendations of the manufacturer and be protected from moving parts and hot surfaces. Looms, grommets, cable ties, and similar installation hardware should be used to anchor and protect all wiring.
2. Fuses or circuit breakers should be located as close to the power takeoff points as possible and properly sized to protect wiring devices.
3. Particular attention should be paid to the location and method of making electrical connections and splices to protect these points from corrosion and loss of conductivity.
4. Ground termination should only be made to substantial chassis components, preferably directly to the vehicle battery.

Caution!

When drilling into any vehicle surface make sure that the drilling area is free from any electrical wires, fuel lines, vehicle upholstery, etc., that could be damaged.

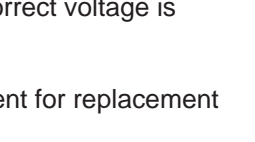
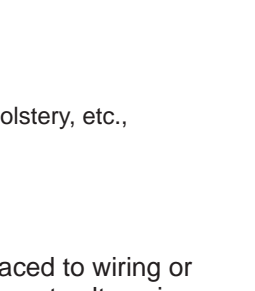
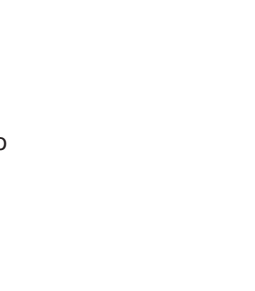
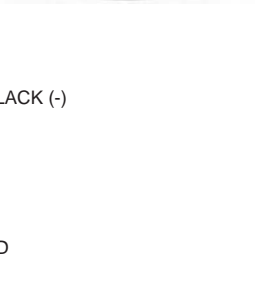
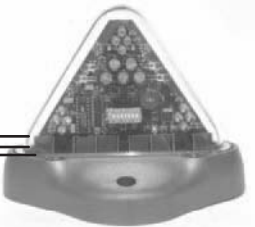
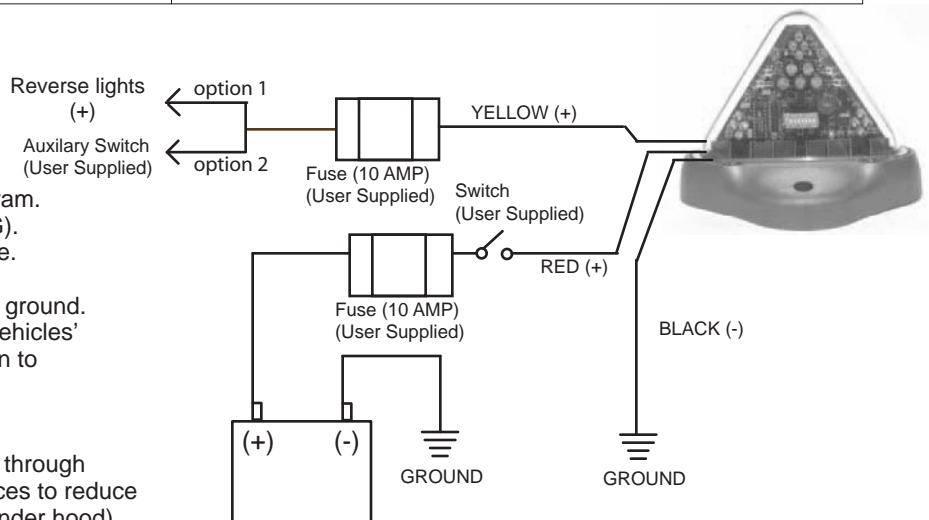
Troubleshooting

Notes:

Most strobe failures, including intermittent or erratic operation as well as failure of operation, can be traced to wiring or battery problems. Check all wiring, connections, fuse, switch and battery voltages to insure that the correct voltage is reaching the strobe light.

•Hella shall be absolved from all responsibility for any modifications performed on the luminaire.

•Use only certified original equipment for replacement purposes.





MiniRAY®

LED Warning Beacon Flash Pattern Instruction

Please retain for future reference

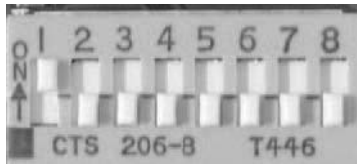
Light Output & Flash Mode Selection:

The beacon is programmed with four flash patterns, plus an option to use a special reverse indicator pattern. All beacons are shipped from the factory set for quad flash and high intensity. To change the settings, remove the lens, locate the DIP switch, and select the desired mode or options by moving the required number of switches to the forward, or ON position. Refer to the images below.

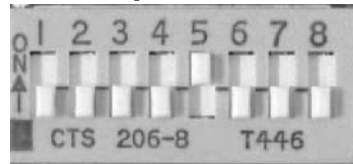
Flash Patterns

User Options

1. Single Flash

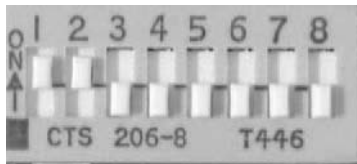


5. Backup Indicator/Auxiliary Flash

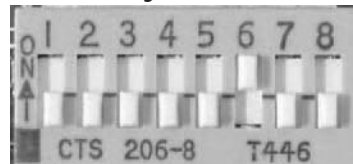


(Beacon will display a unique flash pattern when vehicle is put in reverse. Flash pattern will return to selected pattern when vehicle is taken out of reverse.)

2. Double Flash

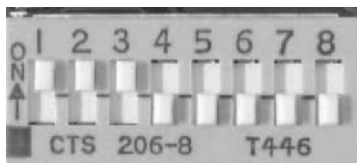


6. Battery Monitor

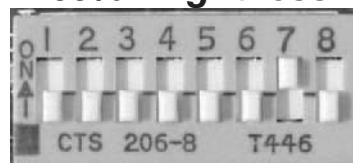


(Beacon will monitor the vehicle battery. When a low battery condition is detected, the strobe will flash an error code of 2 quick flashes and 2 low flashes. When battery conditions return to normal, beacon will reset automatically to the selected flash pattern in approximately 15 minutes.)

3. Quad Flash

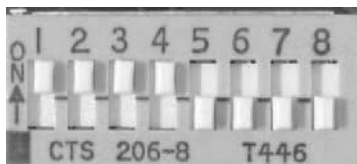


7. 65% Brightness

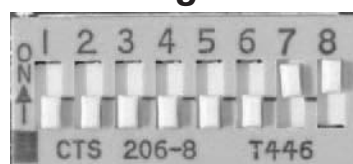


(Reduces the light intensity of the beacon to 65% of max.)

4. Multi Flash



8. 35% Brightness



(Reduces the light intensity of the beacon to 35% of max.)

Flash Error Codes: MiniRay has been programmed with the following error codes:

- 1) 3 fast flashes/ 3 slow flashes: Unrecognizable flash pattern
Correction: choose one of the four flash patterns.
- 2) 2 fast flashes/ 2 slow flashes: The vehicle battery is low
Correction: Start vehicle to recharge battery

All error flash codes will reset automatically when conditions warrant.